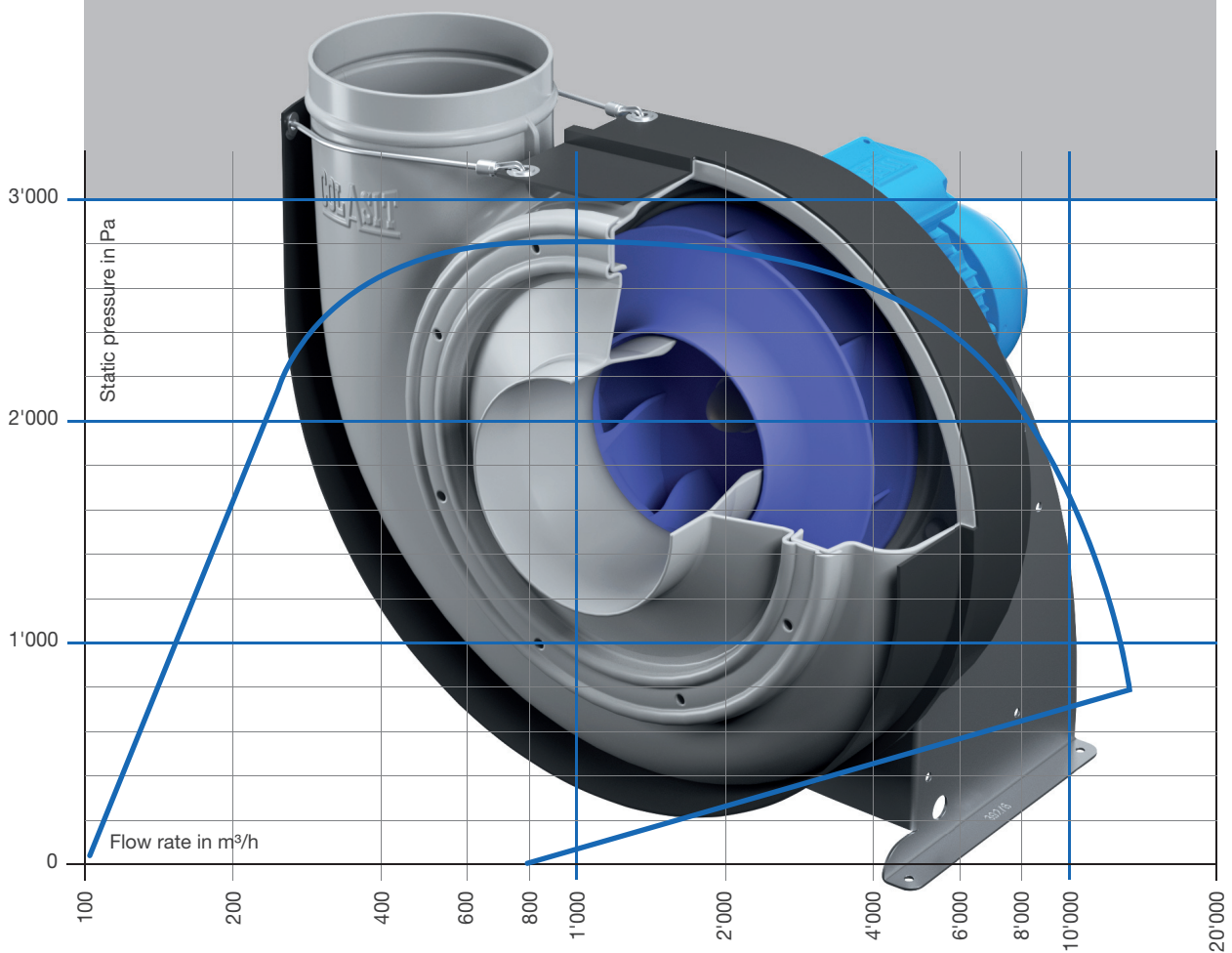
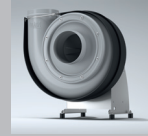


FANS

## CMVpro 125 - 400

Medium pressure -  
radial fan in plastic  
Direct drive



[www.colasit.ch](http://www.colasit.ch)

**Performance**

Flow rate: min. 150 m<sup>3</sup>/h to max. 13'500 m<sup>3</sup>/h  
 Static pressure: min. 50 Pa to max. 3'000 Pa  
 Efficiency: max. 78 %  
 Inlet / Outlet-Ø: 125, 160, 200, 250, 315, 400 mm

**Housing**

- Self-supporting design
- Thermoformed (Twin-Sheet)
- Available in: PPs, PPs white, PPs-el, PE, PVC, PVDF
- 6 different outlet positions

**Impeller**

- Injection-molded
- 7 or rather 11 backward-curved streamlined blades
- Torque transmission achieved by aluminium hub, covered with plastic
- Adaptor for easy impeller mounting
- Available in: PPs, PPs-el, PVDF

**Support**

- Sturdy sheet-metal construction
- Available also in stainless steel

**Drive**

- Direct drive: - Impeller is mounted directly onto the motor shaft
- Motor: - Flange mounting motor for direct drive  
 - EC- Motor for direct drive  
 - PM-Motor for direct drive (Mandatory with FC)

**EX-Protection**



Construction in ATEX. Available in zone 1 + 2

**Hub Seal**

- Standard seal: minimum gap hub-housing
- Hub seal mechanically sealing; optional
- Back plates; optional

**Options**

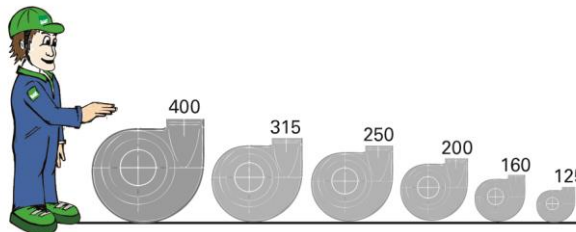
- flange on inlet and outlet connection
- Condensate drain available in 2 versions
- Splinter protection
- Vibration absorbers for ground erection or ceiling suspension
- Elastic sleeves with stainless steel hose clamps

**Accessories mandatory**

**Accessories selectable**

- Wall bracket
- Motor cover
- Frequency converter IP 66 / IP 54 / IP 20

**Dimensions**



Fans CMVeco 125 - 400

